



M8000-C Condensate Level Switch

English

ECN # 5936, Effective Date 10/2011, MF-028, Rev C

Installation Instructions:

- Test fit to be sure that float has clearance on all sides; this is to allow for free travel of the float on the stem. If the float does come in contact with the inside of the tee, identify the location and lightly sand that section of the tee.
- The M8000-C can be press fit into $\frac{3}{4}$ SCH 40 PVC pipe tee until the flanged surface of the stem contacts the top of the pipe tee. This method of installation allows for removal of the switch without damaging the drain system in which it is installed.
- The M8000-C can also be glued into the $\frac{3}{4}$ SCH 40 PVC pipe tee, using standard PVC pipe cement, in accordance with the manufacturers' instructions. Again the flanged surface of the stem must contact the top of the pipe tee. This method of installation will require the drain system to be cut in order to remove the switch.
- Placement, as detailed in the previous two steps, ensures that the switch will be in the correct location in the tee.

Specifications:

Float Material:	Polypropylene
Stem Material:	PVC
Maximum Temperature (°C):	60°
Maximum Pressure (PSIG):	50 (with vent hole plugged)
Float Specific Gravity:	0.85
Reed Switch Rating:	60 Watt SPST
Lead Wires:	22 ga. MTW 24"
Fitting:	Designed to be mounted in $\frac{3}{4}$ SCH 40 PVC pipe tee. Can be mounted in the positions shown in Figure 1.

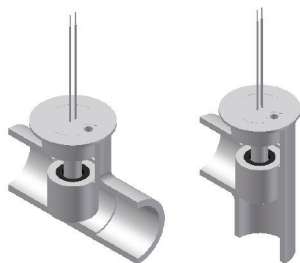


Figure 1

Approvals:



General Information:

- The M8000-C is designed to be mounted vertically for the best results, but satisfactory operation is possible with the stem at an angle of up to 30° from vertical.
- The vent hole in the stem should not be plugged. It is to allow for the escape of air that could be trapped above the float and interfere with the operation of the switch. If required, the vent hole can be tapped and a hose barb fitting can be installed.
- Excessive contaminants in the fluid may inhibit proper float operation. Occasional cleaning may be required and may be done as follows:
 - If the M8000-C **can** be removed from the pipe tee, then just wipe the switch assembly off with a soft cloth. Use caution when cleaning around the clip.
 - If the M8000-C **cannot** be removed from the pipe tee, then a strong stream of **clean** water may be used to rinse off the stem assembly.

Warnings:

- DO NOT exceed the Maximum Pressure (50 PSIG) and Maximum Temperature (60°C) ratings listed in the Specifications section.
- DO NOT exceed the Current and Voltage ratings listed below:

WATTS	VOLTAGE	CURRENT (AMPS) (Resistive)
60	220 VAC	0.4
	110 VAC	0.5
	120 VDC	0.2
	24 VDC	0.5

- The ratings listed above are for resistive loads ONLY.
- Life expectancy varies with the application. Contact Madison Company if life cycle testing is required.
- Level switches have been designed to be shock and vibration resistant. For maximum life both should be minimized.
- Physical damage to switch assembly may render product unserviceable.
- Installation close to magnetic materials or strong magnetic fields may affect operation.